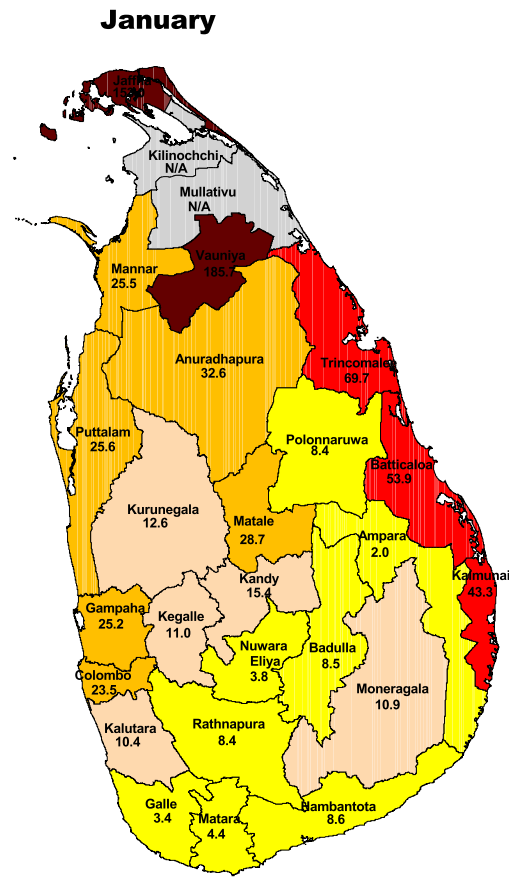
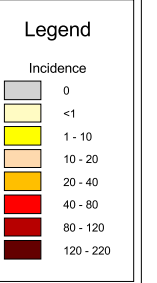
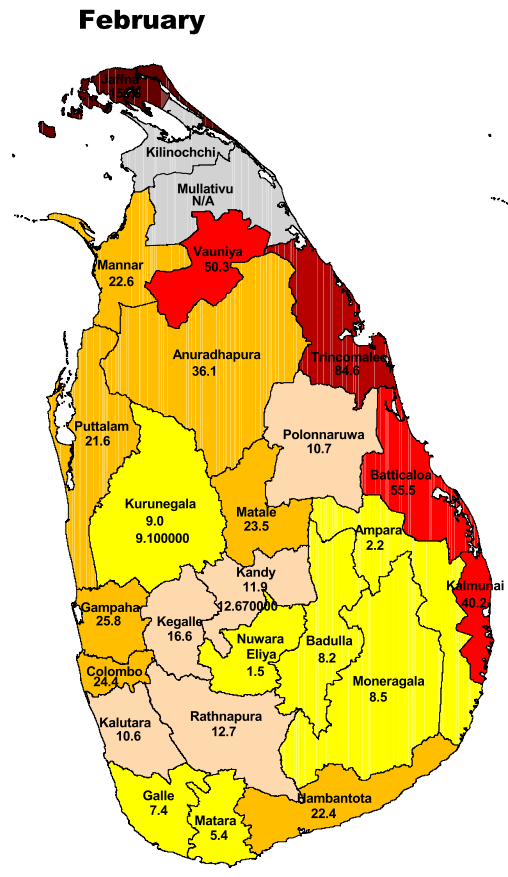


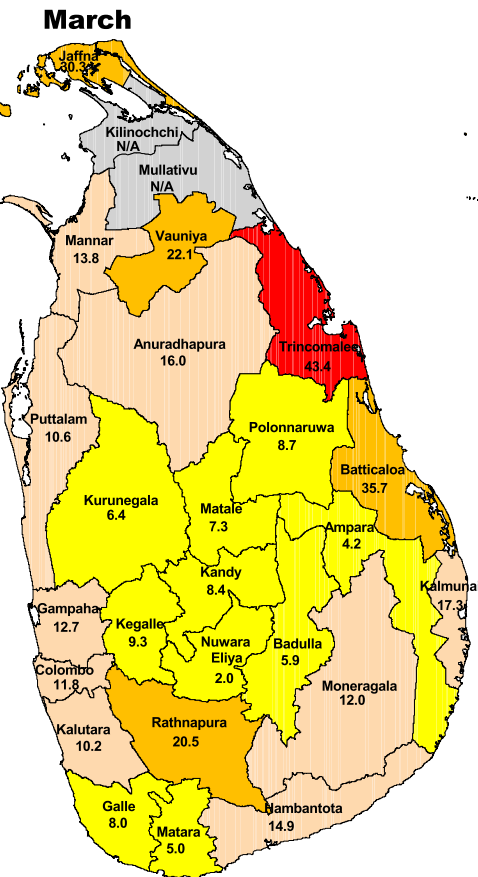
DENGUE STATISTICAL SHEET - 2010



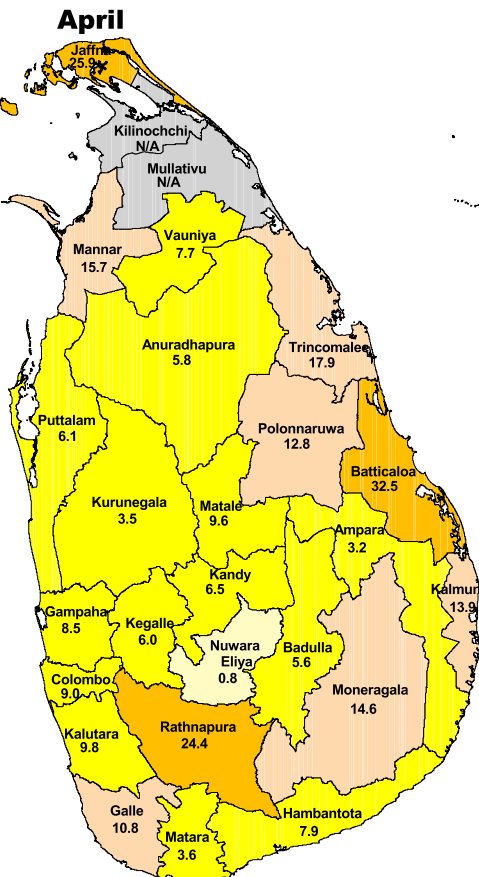
Total Suspected Cases : 4,768
Deaths : 50



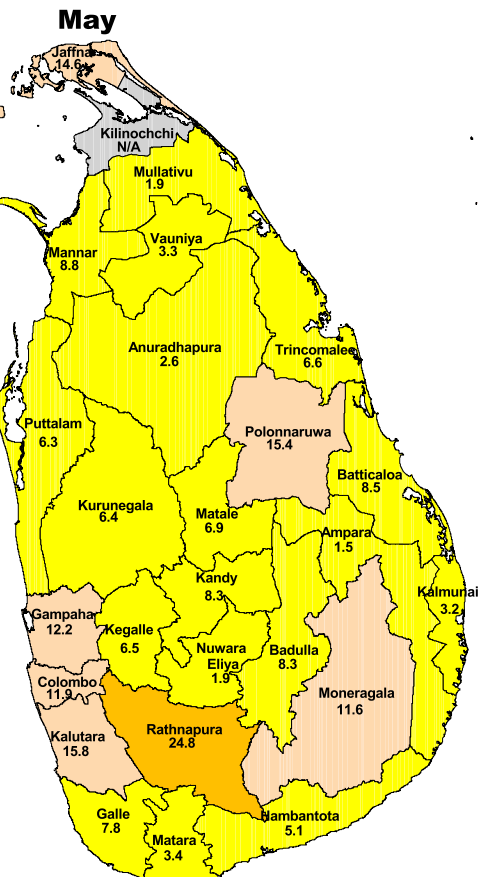
Total Suspected Cases : 4,722
Deaths : 14



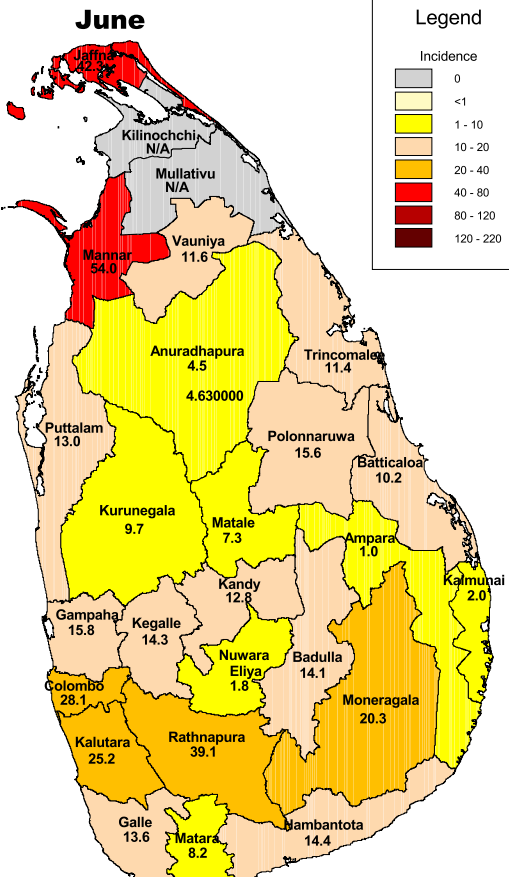
Total Suspected Cases : 2,528
Deaths : 20



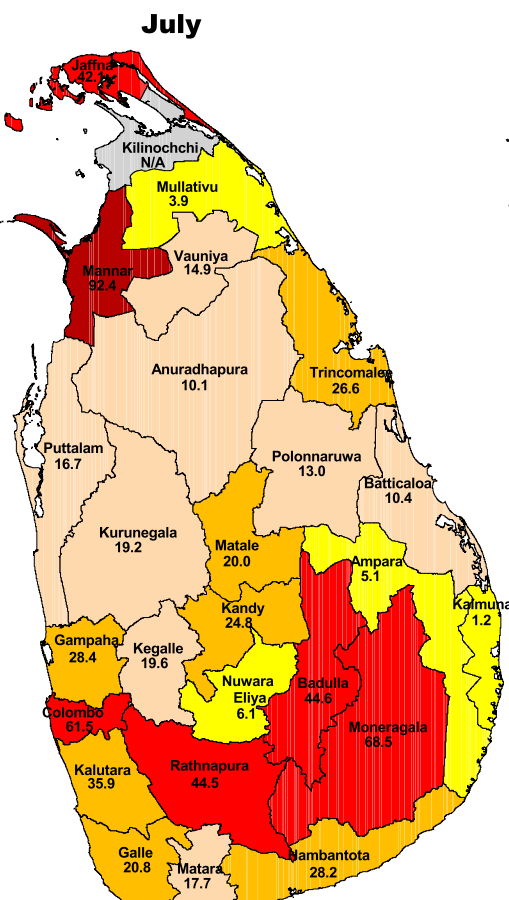
Total Suspected Cases : 2,004
Deaths : 17



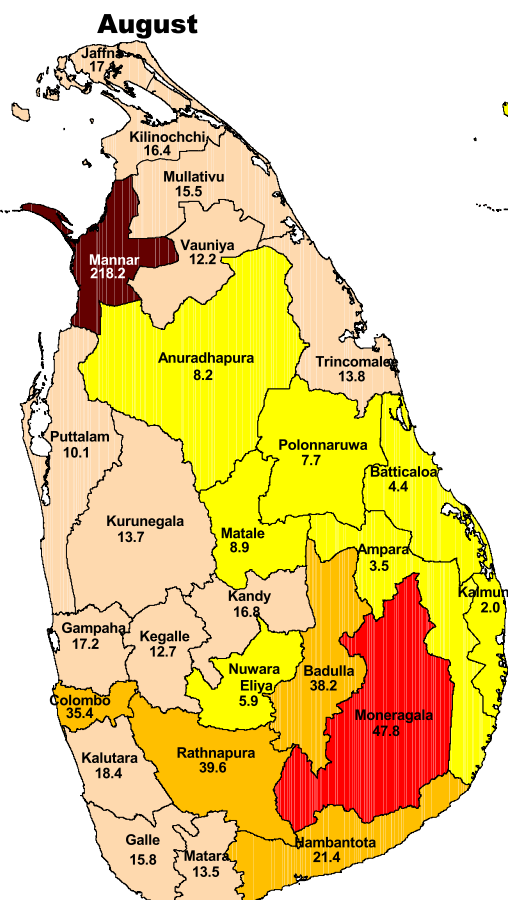
Total Suspected Cases : 1,950
Deaths : 16



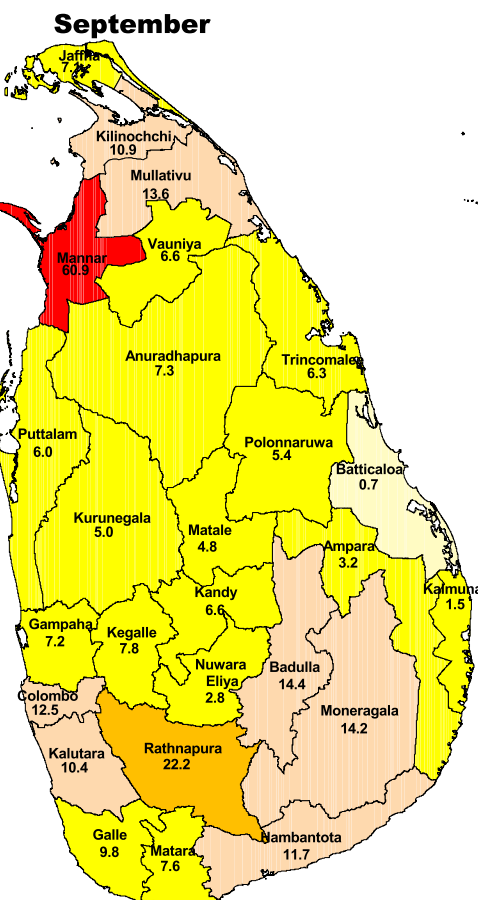
Total Suspected Cases : 3,437
Deaths : 31



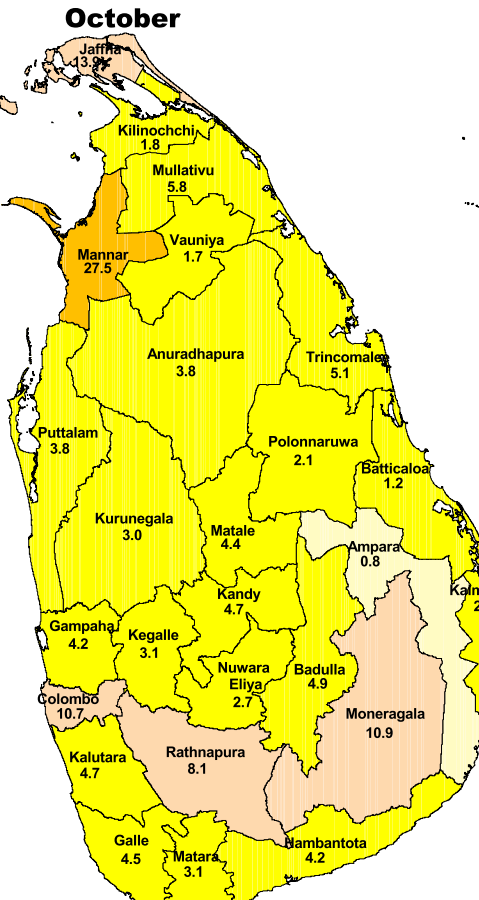
Total Suspected Cases : 6,113
Deaths : 48



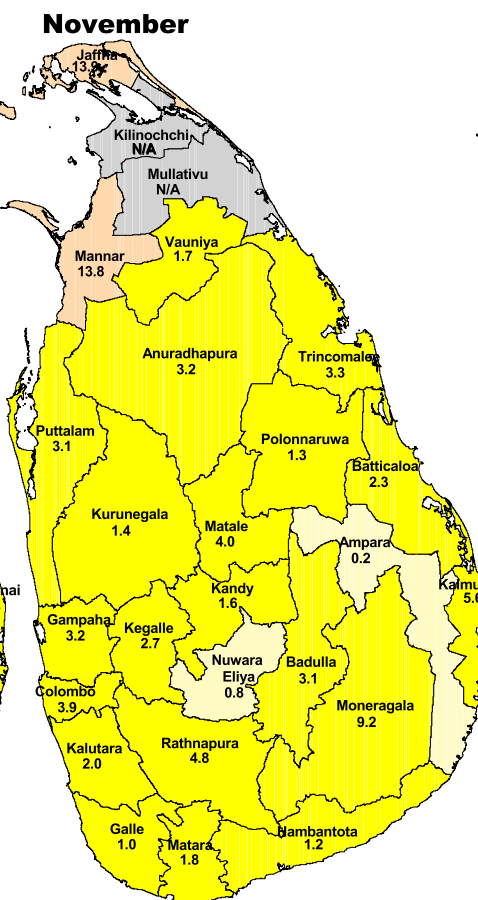
Total Suspected Cases : 4,168
Deaths : 25



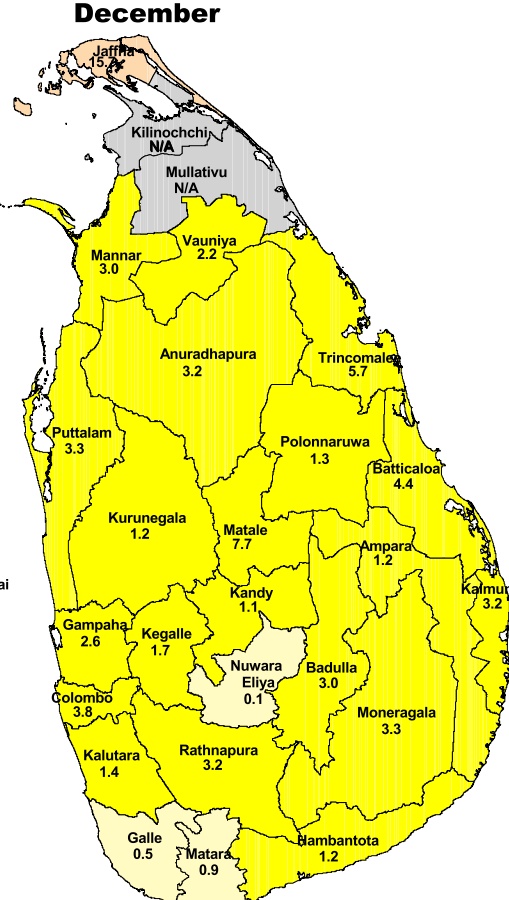
Total Suspected Cases : 1,863
Deaths : 8



Total Suspected Cases : 1,122
Deaths : 0



Total Suspected Cases : 645
Deaths : 2



Total Suspected Cases : 607
Deaths : 8

Note: The boundaries and names shown and the designations used in this map do not imply official endorsement by the United Nations

Source: Epidemiology Unit, Ministry of Health